

EASTERN HILLS HIGH SCHOOL
Band Department
5701 Shelton Fort Worth, Texas 76112
817-496-7606
www.ehsmusic.org

INFORMATION HANDBOOK

PURPOSE

The purpose of this handbook is to inform band members and their parents of the expectations of the EHHS band program. The following guidelines are designed to promote the constructive teaching and learning environment needed to maintain a successful program.

IN SHORT – THIS IS ANYTHING AND EVERYTHING YOU NEED TO KNOW ABOUT THE BAND PROGRAM AND WHAT TO DO TO HAVE A SUCCESSFUL BAND EXPERIENCE.

HIGHLANDER BAND PHILOSOPHY

The Eastern Hills High School band department is dedicated to helping students become responsible adults through participation in musical ensembles. A member of the Eastern Hills High School band is expected to provide a commitment to responsibility and organization. Members are given the opportunity to develop self-esteem, poise, and confidence in addition to strengthening their musical abilities. The band staff considers these personal traits vital to the success in the professional world. It is our goal to give every student the finest musical experience and a chance to reach the highest possible level of success.

While the musical activities are the core of our program, the total band experience provides the student far more opportunities. Students may participate in leadership development programs; learn and apply planning, financial budgeting, and team-building skills; and spend time with other students and adults who have direction and goals as an integral part of their lives. The cornerstone and legacy of the Eastern Hills Band program is excellence through dedication, education, experience, and a team effort from students, boosters, and staff. The substantial recognition that the band receives is a result of the success acknowledged in the past at reaching for and achieving excellence. The 2009-2010 school year looks to be an exciting opportunity to build on that legacy. It is also important to note that all involved enjoy an added benefit of the total band experience. The fun and meaningful relationships and memories that are developed by both students and parents last well beyond their years of participation at EHHS.

Hard-working students, dedicated staff, involved and active parents, and a supportive administration and community all combine to make it possible for the Eastern Hills Band Program to offer an outstanding array of musical opportunities. Our students are expected to set expectations for themselves and their program, and the rewards of meeting those expectations are immeasurable. Members of the Eastern Hills High School Band develop musically, emotionally, mentally, and socially.

MEMBERSHIP REQUIREMENTS

MARCHING BAND – *an outdoor ensemble using wind, percussion, and color guard, dedicated to music and movement on a large scale.*

The student must be enrolled in the Marching Band class during the fall semester and must comply with all rules and regulations. Students will attend all summer rehearsals, Summer Band Camp, must meet all financial obligations and attend all rehearsals and performances (contests, parades, and football games).

SYMPHONIC BAND – *an indoor ensemble using wind and percussion, dedicated to the performance of standard literature as well as new works for wind band from all over the world.*

The student must be enrolled in the Symphonic Band period during the spring semester and must meet all financial obligations. Each student must comply with all rules and regulations. The student agrees to attend all before and after-school rehearsals (including section rehearsals) and all performances.

WINTER GUARD – *an indoor group dedicated to extending the color guard medium using costume, recorded music and movement with flags, sabers, and many other implements.*

The Winter Guard is a select group with membership through audition only. The student agrees to attend all rehearsals and performances. The student must have been a member of the fall Marching Band and must have met his or her financial obligations for the fall. Each member must meet all financial obligations and must be a member in good standing of the respective band class if he/she plays an instrument.

WINTER DRUMLINE - *an indoor ensemble using field percussion and concert percussion instruments as well as movement and choreography to extend the marching percussion medium*

The Winter Percussion Program is a select group with membership through audition only. The student agrees to attend all rehearsals and performances.. Each member must meet all financial obligations and must be a member in good standing of the respective band class.

JAZZ BAND - *an ensemble dedicated to the performance and education of jazz in all forms, using saxophones, trombones, trumpets, piano, guitar, drums and string bass.*

The Jazz Band is a select group that is open to all students who have met their financial obligations. Members must agree to attend all rehearsals and performances.

ATTITUDE

Those students who have a positive mental attitude, regardless of their individual skills, will always have a place in the Eastern Hills Band. Those who have pride in themselves will project a positive mental attitude. Characteristics of a positive mental attitude include a cheerful and dedicated outlook toward rehearsals and performances, cooperation in the preparation and maintenance of equipment and facilities, and an eagerness to do what is necessary to be successful. *In short, the total band member is someone who is always willing to give his or her best for the good of the organization.*

BEHAVIOR

Once you have become a Highlander Band Member you are always representing the school and your family. Every band member should be conscious of their behavior and how that behavior reflects upon the entire program. Your actions will be seen and interpreted by many people. Take pride in what you do and how you do it. Drawing undue attention to your self will not be tolerated. During trips, bus drivers, directors, and chaperones have disciplinary authority while students are riding the buses. School policies will be observed at all times. Refer to the codes of conduct at the end of this manual.

GRADING

Band is a unique course at Eastern Hills High School. It has curricular requirements just as any other academic discipline but it also has out-of-class time requirements. The strength of our band program is the consolidation of these requirements into one performance-based academic course of study. Commitment from each individual student is the driving force behind the organization and is reflected in the level of achievement reached by the individual and the program.

Band is a learning activity. Although your directors frequently function as leaders and conductors, we are primarily teachers responsible for the musical and aesthetic education of each student in the band program. This is the reason we are absolutely insistent upon each student's daily participation. Rehearsals attendance is required and reflects on the student's daily grade. Every band member is held accountable for their attendance, punctuality, materials, and most importantly preparation.

Student grades are grouped into THREE categories:

1. Daily Grades (50%)
 - a. Daily Class Participation
 - b. Daily Supplies/Material Checks
 - c. Daily, punctual attendance

2. Playing Grades (25%)
 - a. Weekly Playing Tests
 - b. Chair Tests
 - c. Scales
 - d. Band Music playoffs
 - e. UIL Solo and Ensemble Music

3. Performance Grades (25%)
 - a. Attendance at contests, concerts and other performance events.

Attendance -An absence may be excused for illness, death in the family, or another school sponsored activity that has been approved by Ms Bernal at *least two days in advance*. An unexcused absence from a performance, clinic, or out-of-school rehearsal will result in the lowering of that individual's grade and the possibility of replacement by an alternate for the remainder of the performing season. Note: Student employers must be notified of the band schedule in advance. Work commitments will be treated as *unexcused* absences.

Materials - Band members must bring their instrument/equipment and keep it in good working order for every rehearsal and performance. Brass players should value oil at all times. Reed players should have at least one spare reed at their seat during rehearsal. Ideally, you should have four to five reeds that all play that you rotate using from day to day. Your reeds will last longer and you will get better play from them if you do not use the same reed all the time from the day it is new until it is worn out.

Percussionists should each have a pair of concert snare drum sticks and mallets. Always make sure you have all of the required equipment needed to perform on your assigned instrument.

Playing Tests- Evaluation of student's performances of assigned music, theory sheets, rhythm sheets and scales will be conducted weekly. Some tests will be conducted in class. Others will be heard in sectionals before and after school. If you are having trouble with your music, contact one of the directors for a time after school when you can get some help. Music playoffs will begin the first full week of school and will continue throughout the year. Playoff music will be posted on the bulletin boards at least one week in advance so that you may adequately prepare yourself. Should a student not pass off their music, the directors have the option of assigning that student to alternate status within the performing ensemble. Think ahead and don't let the group down!!!

Performances - Performances are viewed as major tests: a performance is a learning experience that cannot be duplicated in a rehearsal hall or practice room; the level of concentration required in a public performance assists each student in developing an insight into his/her own level of performance; a performance is an important evaluative tool, allowing comparison of a student's performance in relation to classroom objectives presented and with past performances. Grades in band reflect the student's performance in all aspects of being a responsible member of the performing organization. This is a co-curricular course that is based on performance and requires after-school rehearsals and/or performances.

ELIGIBILITY

High School Credits

1. Two semesters of Marching Band satisfies the P. E. credit requirements for graduation. Any band course counts toward Fine Arts credit, Elective credit and Honors Credit.
2. UIL participants are eligible to participate in contests during the first six weeks of the school year provided the following standards have been met:
3. Students beginning 9th grade and below must have been promoted from a lower grade prior to the beginning of the current school year.
4. Students beginning 10th grade must have earned five credits which count toward state high school graduation requirements.
5. Students beginning 11th grade must have earned a total of ten credits which count toward state high school graduation credits OR a total of five credits which count toward state high school graduation requirements must have been earned during the 12 months proceeding the first day of the current school year.
6. Students beginning 12th grade must have earned a total of 15 credits which count toward state high school graduation credits OR a total of five credits which count toward state high school graduation requirements must have been earned during the 12 months proceeding the first day of the current school year.

Grades – “No Pass, No Play”

A student who receives grade below 70 in any class on their report card (other than an identified advanced class and after the first six weeks) or a student with disabilities who fails to meet the standards in the Individual Education Plan (IEP) may not participate in extracurricular activities for three school weeks.

An ineligible student may practice or rehearse, however. The student regains eligibility after the seven calendar-day waiting period has ended following a grading or the three school-weeks evaluation period when the principal and teachers determine that he or she has earned a passing grade (70 or above) in all classes. AP, Pre-AP and Honors do not count toward UIL eligibility.

All schools must check grades for all participants at the end of the first six weeks of the school year. From that point, grades are checked at the end of the grading period whether it is six, nine, or twelve weeks in length. Students who pass remain eligible until the end of the next grading period. All activity coaches and directors are responsible for obtaining official grade reports from the individual the principal designates as the keeper of official grades before the student represents the school. This provision applies to all grading periods. It also applies to all three-school week evaluation periods for ineligible students.

All students are eligible during a school holiday of a full calendar week or more. When the bell rings to dismiss students for the December holidays, all students are eligible until classes resume in January.

MARCHING BAND PROCEDURES

Attendance – In order to maintain a high quality marching band, attendance from all members is essential. When any student misses a rehearsal, not only do they miss valuable instruction for themselves but they also make the time unproductive for those around them. It is impossible to correctly execute complex marching maneuvers when someone in the form is missing.

ABSENCE POLICY: *Directors should be notified in advance if a student is going to be absent from a rehearsal or performance. Absences from band rehearsals or performances are unexcused unless due to (a) personal illness, (b) death in the family, (c) an emergency, or (d) special permission of the directors obtained in advance by the parent or guardian. Excessive absences, excused or otherwise, will result in loss of privileges.*

Rehearsals are **never cancelled** due to inclement weather. In the event of steady rain, we will rehearse indoors and then go outdoors at the first opportunity.

Marching band rehearsals begin at 7:20 A.M. every Monday thru Friday and every Tuesday night from 5:00 – 8:00 pm. This means you should be in your respective warm-up area by 7:15 am or 4:45 pm.

The rehearsal schedule is set well in advance, allowing students to plan outside activities and obligations.

Alternate Status - The Marching Band employs an alternate system to prepare for contingencies with regular members. Through this system, there are more members than there are spots on the field. Alternates are assigned once all marching spots have been filled.

1. Alternates march on an as-needed basis and are utilized in the event someone cannot perform due to illness, excessive absences, or no longer exhibits the necessary enthusiasm, attitude, and dedication needed to be a member of a top-notch organization.
2. Alternates must be present for all rehearsals and performances and must meet their financial obligations. They are considered full members of the organization and will have duties related to the preparation of the band for performances at all times. Alternates will travel on all trips with the Marching Band.

Marching Rehearsal Dress Code – Weather can become a hazard without proper attire. The following dress code keeps students safe from the heat while rehearsing outdoors.

1. Students must wear tennis shoes with socks. No other shoe is acceptable. Any other shoe (sandals, flip-flops, boots, high heels) constitutes a health hazard.
2. All students are encouraged to wear a hat while outside.
3. Sunglasses must be worn at all times.
4. Loose-fitting and light colored clothing protects you from overheating and allow free movement.
5. Students must wear shorts. Students without shorts will not be allowed to rehearse during the warm months. Long pants worn during cold rehearsals must not drag across the ground.
6. The directors have final say on appropriate attire.
7. Students must provide their own supply of water.
8. Sunscreen should be applied before every rehearsal no matter the cloud cover.

Rehearsal Procedure – Because of the large scale of marching rehearsals, a strict system of behavior must be maintained while on the field. This system is set down during summer band rehearsals and can also be found in your Marching Band Manual. Failure to abide by this system will result in alternate status or dismissal from the ensemble.

Performance Procedure – All marching bands are viewed in a more collective sense than any other type of ensemble. The moment you put on your EHHS Band uniform, you are no longer viewed as an individual but a part of a whole. Your actions (or inactions) reflect accordingly on the *entire* band program. Please adhere to the following to ensure a consistently positive image for all involved.

1. Report Times: All members are given report times based on their position in the band. For example, Blue Crew members and leadership are expected to report earlier than regular members. *Each band member is expected to know his or her own report time.* Tardiness or absences will result in alternate status or dismissal from the ensemble.

2. Inspection: All members must assemble before each performance for uniform and instrument inspection. Those who fail more than two inspections will be assigned alternate status. All members must have:
 - a. Black marching shoes (student purchase)
 - b. Black socks (plain black, no patterns)
 - c. Bibber pants sized so the cuff hangs just above the top of your shoes while standing at attention.
 - d. Marching jacket, buttoned and zipped correctly
 - e. Hat and plume in hat box
 - f. Instrument in good working order (repairs must be made BEFORE inspection)
 - g. All appropriate supplies (quality reeds, valve oil, slide grease, lyre, music – see replacement fee schedule)
 - h. No jewelry, hats or other headwear is allowed. Hair must be inconspicuously styled and able to fit inside your hat.
3. Loading: A volunteer Blue Crew is there to *assist* regular members in handling their instrument. Every band member is individually responsible for the safe loading and unloading of their instrument whether by equipment truck or bus.
4. Transportation:
 - a. All members must adhere to the school district and band codes of conduct for busses. Those who fail to do so will be sent home with an unexcused absence and possible additional consequences depending on the offense.
 - b. Alternate transportation arrangements must be made through the head director. Failure to notify the directors of a change may result in an unexcused absence and/or administrative contact.
 - c. ALWAYS make note of the return time so you can arrange transportation home. *Students must be taken home promptly after football games for the safety of all involved.*
5. Game Conduct: The Marching Band will perform at approximately nine football games during the Fall athletic season. As always the district and band codes of conduct apply.
 - a. Upon exiting the bus, students must remain in full uniform at all times unless told otherwise by a director. Jackets may be removed in uncomfortable weather if all members are wearing a band t-shirt. Cold weather clothing
 - b. Students will assemble and march together into their assigned seats in the stands. Hats are carried in hatboxes until performance time. Students remain standing until all are ready to be seated.
 - c. Students must remain in the band section at all times. No family, friends, or alumni are allowed in the band section at any time.
 - d. Students may not accept food or drink from friends or relatives while in the stands.
 - e. Always watch and listen to the drum major(s) and directors during the game. Students must be prepared to perform at all times.
 - f. No individual playing is allowed at anytime. Stand tunes will be led by the drum major(s) or a director.
 - g. During another band's halftime performance, members will stand SILENTLY at parade rest on the sideline to observe. No comments or cheers beyond applause at the conclusion are appropriate. *Respect will be shown to our fellow musicians at all times.*
 - h. After half-time dismissal, members are allowed to leave the seating area until the 2:00 mark of the 3rd quarter. Failure to report on time will result in loss of 3rd quarter privileges for the following game. Professional conduct is expected at all times!

As with all band events...ON TIME IS LATE. EARLY IS ON TIME.

UNIFORMS

Band uniforms are the property of the school district and will be issued to each student in the marching band. Each student will be charged a \$20.00 usage fee for cleaning. Any damage due to mistreatment or improper care of the uniform will be the responsibility of the student and parents. Students are fitted as closely as possible. When alterations are needed, the uniform will be altered by a member of the uniform committee only! Students and their parents are not to make any alterations to any Eastern Hills Band uniform.

1. The marching band uniform consists of a band hat, band jacket, band pants, black socks, and regulation black marching shoes. The uniform will be checked out to each student before every performance and returned that evening.
2. It is mandatory to wear the uniform properly in public. Section leaders will check with each person in their section to make sure each has his or her instrument and all parts of his/her uniform, especially on contest days.
3. Make sure your shoes, instrument case, and all belongings have your name on them.
4. You should remain in full uniform (minus hat) at all times at performances, unless otherwise directed.
5. After you are dismissed following any performance, band uniforms must be hung on the back of the assigned chair in the manner demonstrated by the directors. Uniforms will need to be returned to the hanger on the following school day and be placed back on the assigned uniform rack in the assigned garment bag. Failure to do so will be reported to the directors by the Drum Major(s) and will result in loss of bonus points and third quarter break.
6. Leave all valuables at home. Remove all earrings, facial piercings, rings (anything showing). Always wear your designated shirt under your uniform. On days of performances, all band students should wear boxer shorts or gym shorts to make it easier when changing clothes. Black socks worn with the uniform should come to the mid-calf level of the students' leg. Students not having these items will not be allowed to perform with the group.

SYMPHONIC BAND PROCEDURES

Symphonic Band builds on the musical fundamentals taught during marching season and introduces students to more difficult music which requires more intensive individual preparation. All of the same principals of conduct and responsibility apply.

Rehearsal Attendance: Symphonic Band rehearsals generally occur within the usual class time however during UIL Contest season (January thru April); the band will typically start at 7:30am twice per week in addition to the usual rehearsal time. Each student is expected to be in his/her seat, with stand, music, pencil and all other necessary materials BEFORE rehearsal begins. Cases should be left in the Instrument Storage Room or around the walls in the rehearsal hall during rehearsal. There should be silence in the rehearsal hall when the conductor gets to the podium.

Rehearsal Etiquette:

1. Talking during rehearsals must be kept to a minimum. Talking should always be about music we are studying and should never be a distraction to the conductor or other students.
2. When the conductor's hands are up, instruments should be up and ready to play.
3. A pencil is essential to effective rehearsal! *Every player* must have one readily available.
4. Problems of an individual nature (music missing, problems with instruments, etc.) should not take class time. These issues should be dealt with either before school, after school, or just before class as a last resort.

Warm-up: This is when we focus on the fundamentals of our playing so that we may improve both as a group and as individuals. These fundamentals form the basis of effective sight-reading and technique and are as important as the music the ensemble is preparing.

Clean Up:

At the end of rehearsal, instruments should be put in the Instrument Storage Room until time to take home for practice. Timpani and keyboards for which there are covers should be covered. Small equipment, including cymbals and concert snare drum, should be put in cases (if available) or returned to the appropriate storage area. This will help keep non-percussionists from "playing around" and will keep the equipment in better working order.

SCHOOL OWNED INSTRUMENTS & EQUIPMENT

Some school-owned instruments and equipment will be checked out to students during the year. A \$20.00 user fee will be required per semester from students using school-owned instruments. This fee will be used for the normal upkeep and repair of the instruments. The high school band department will assume responsibility for normal maintenance and repair of any school-owned instrument. However, any damage or neglect will be the responsibility of the student and their parents. Your instrument will include a basic care sheet as well as a sheet listing a place you may purchase supplies.

INSTRUMENT CARE

School-owned instruments become the responsibility of the student to whom they are issued. Any damage other than normal wear and tear will be repaired at the student's expense. Each student using a school owned instrument will be charged a \$20.00 usage fee every semester for maintenance.

Individual instruments must always be maintained in top playing condition. Always show the director your instrument before taking it in for repairs. Remember that horseplay can cause damage to instruments and equipment. Be careful with your own instrument, place it out of harm's way if it is necessary for you to put it down, and never play around with or play on anyone else's instrument.

CLASSROOM GUIDELINES

1. No gum, candy, food, or drink is allowed in the band room.
2. Students should be in their seats, ready to rehearse, fifteen minutes before the rehearsal is scheduled to begin.
3. Band members must bring their all required supplies to every rehearsal and performance. These are listed [insert section here.]
4. Instruments should be properly disassembled and stored in a band room locker. Clothes and other articles should be kept in your locker that was assigned to you by a director or homeroom teacher. **DO NOT** leave your money, purses, wallets, or other valuables **UNATTENDED** during rehearsals or during the school day. We cannot be responsible for valuables left in unsecured areas.
Clothes and shoes left in the band room at the end of each semester will be donated to charity organizations.

GENERAL CODE OF CONDUCT

1. Students will follow the Fort Worth ISD student code of conduct at all times.
2. Students found in possession or under the influence of alcohol or narcotics will be turned over to the police and removed from the program.
3. Be respectful toward your fellow members, student leaders, chaperones, staff and directors.
4. Always be **EARLY**.
5. Questions and concerns should always be brought to student leadership first.
6. Clean up after yourself. Help your fellow band members remember to do the same.
7. Label all equipment (shoes, instrument case, bag, etc.) with your name.
8. Excessive public displays of affection are prohibited.
 - a. Respect those around you by keeping this in private and on your own time.
 - b. The directors will determine what is inappropriate.
 - c. Any member unable to comply with this policy will lose bus privileges.
 - d. Repeat offenders will be sent home at parent's expense or be removed from the program.
9. Never handle an instrument that is not your own. Do not allow others to handle yours.

TRAVEL CODE OF CONDUCT

1. Students will follow the Fort Worth ISD student code of conduct at all times.
2. Noise must be kept to minimum when travelling. No loud screaming, radios, etc.
3. For your safety and that of those around you, never play your instruments on the bus.
4. Never throw anything out of the windows. Keep arms, head, etc, inside windows.
5. Answer roll call for yourself only.
6. Busses should be left in the condition they arrived. Pick up all trash and close all windows before you leave your seat.
7. Be courteous to your drivers and chaperones. Obey them at all times.
8. Do not use the emergency exit doors unless an emergency arises. They are not to be used for loading and unloading the bus.
9. Do not take the large, portable, stereo radios on any trip. If you want to listen to the radio, you must use headphones. (iPods are acceptable)
10. Follow instructions of directors or chaperones at all times. If you don't understand, ask.
11. Kindness and courtesy work miracles in almost every situation. Remember that **PLEASE** and **THANK YOU** cost you nothing and yet are highly valued, especially when received from a young adult.

COMPETITION ETIQUETTE

Contests, festivals, and other adjudicated activities are important features of the Eastern Hills Band program. It is through these activities that we obtain valuable feedback about our progress as individuals and as a program. Although we never “live or die” by any one judge’s or any panel’s opinion of our performance, it is important that we learn the value of giving maximum effort and standing by the results as our best possible effort that day.

Competitive performances are packed with emotion. Because of the amount of time, work, and discipline required to produce award-winning performances, we develop great camaraderie within the organization. We share hardship, discomfort, fatigue, oppressive heat, chilling cold, long bus rides, disappointment, tears, success, and joy. Along with these emotions goes a high level of tension which often causes students to react immaturely. We learn to avoid these normal pitfalls and to channel our energies and attention toward the goal of performance excellence and the ultimate success that will follow. The Eastern Hills Band will stand silently with pride as scores are announced and graciously accepts the results, regardless of outcome. We show our appreciation and respect for those who have earned the right to score ahead of us and gracefully accept our own successes. “Winning” is the state of every individual who has endured the hardships, taken the chance of competing, and done their personal best in the pursuit of excellence. The band’s image is based on each individual. Our public reputation is based upon our appearance, our actions, and our projection of pride and organization. It is the responsibility of each band member to ensure that we present the best possible image at all times.

INDIVIDUAL OPPORTUNITIES

FWISD District Honor Band, TMEA Region Honor Band, TMEA Area Honor Band, TMEA State Honor Band and UIL Solo and Ensemble provide students with the opportunity to excel individually on their instrument and to receive recognition for their musical achievements. Students must be eligible to auditions. There are always outstanding musicians in the Eastern Hills Band, and we strongly encourage participation in these activities. Often, colleges and universities use membership in these organizations as partial criteria for music scholarship consideration.

SAT/ACT TESTING

We have several competitions in the fall that conflict with the SAT and Act test dates. Please try to sign up for the following test dates so not to have a conflict.

ACT	SAT
Dec 13	Nov 1 (recommended date)
April 4	Dec 6
June 13	March 14
	May 2

FINANCIAL OBLIGATIONS

Fees for the year are divided by participant, semester, and group participation. Use the chart below to determine your total obligation:

<u>REQUIRED FEES</u>	FALL – Due August 30th					SPRING – Due February 1st				
	Marching Uniform \$20.00	Band T-Shirt \$10.00	Instrument Use Fee \$30.00	Colorguard Fee \$50.00	Drumline Fee \$50.00	Concert Uniform \$50.00	Instrument Use Fee \$30.00	Winter-guard Fee \$100.00	Winter Drumline Fee \$100.00	Jazz Band Polo \$15.00
Wind Player	✓	✓	✓			✓	✓			
Percussionist	✓	✓			✓	✓	✓			
Color Guard		✓		✓						
Jazz Band							✓			✓
Winter Guard								✓		
Winter Drumline									✓	

<u>OCCASIONAL FEES</u>	FALL					SPRING				
	Band Shoes \$30.00	Rain Poncho \$4.00	Flip Folder \$4.00	Lyre \$4.00 - \$6.00	Region Band \$10.00	Reed Supply Fee \$35.00	Brass Supply Fee \$20.00	UIL Solo & Ens. \$7.00 - \$14.00	Band Banquet \$25.00[A1]	Band Trip \$350.00
Wind Player	✓	✓	✓	✓	✓	✓	✓	✓	✓	✓
Percussionist	✓	✓			✓			✓	✓	✓
Color Guard	✓	✓							✓	✓
Jazz Band						✓	✓	✓	✓	✓
Winter Guard	✓								✓	✓
Winter Drumline	✓							✓	✓	✓

FUNDRAISING

Each year the band and orchestra has the opportunity to compete nationally. This year we are traveling to Atlanta, Georgia to compete in the National Heritage Music Festival. Every member of the band and orchestra is encouraged to go and it will cost \$350.00 per person.

We provide many fund raising opportunities to help defray the cost of the trip. An important and beneficial part of the total band experience is the opportunity to work together and earn the funds needed to support the individual expenses and the entire band program. From this the student learns the necessity of making the money to support his/her activities, budget for the required payments, as well as to work together with other band members and parents. These work experiences along with the other fund raising opportunities provide more than enough opportunity for every student to pay all of their individual band expenses without having to make any out-of-pocket payments.

PRIVATE LESSONS

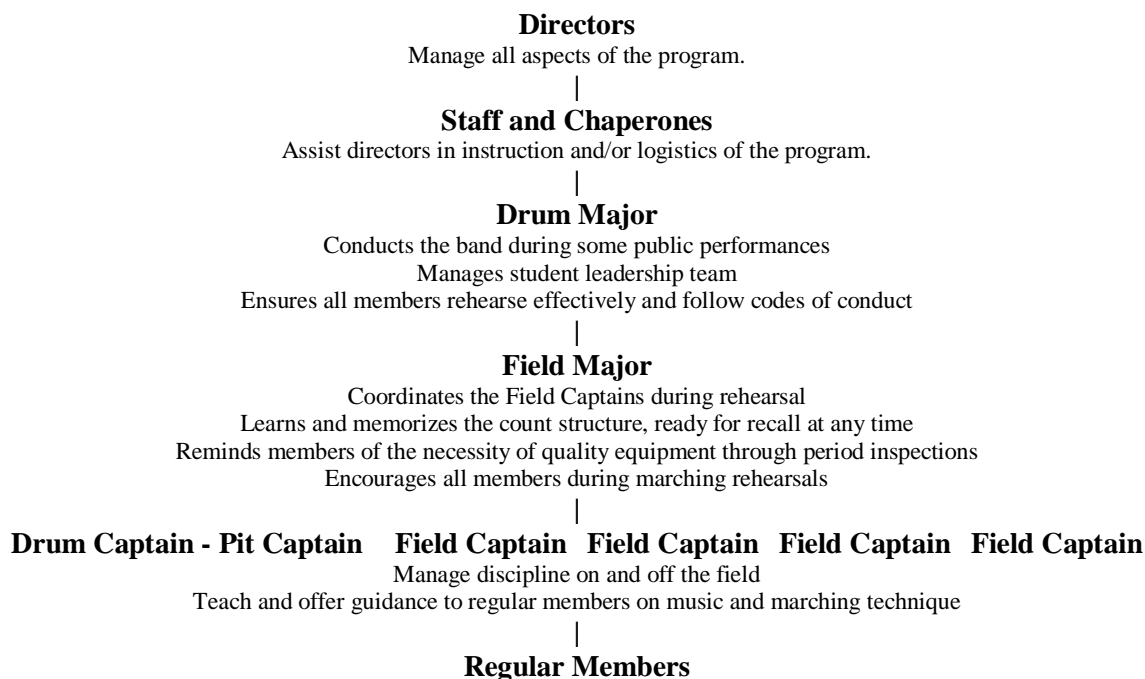
Private lessons are the key to developing an outstanding musical organization. Students who study their instruments privately with a professional show rapid improvement in individual musicianship. As these students improve, their excitement towards practicing increases, they continue to improve, and they become a stronger contributor to the overall success of the band. Private instruction has a great impact on the individual student and on our band program both this year and in the future. Directors will assist you, if needed, in selecting a private instructor. The key to satisfactory results from private instruction is to start as soon as possible.... **SO START NOW!**

STAFF AND CHAPERONES

Anyone on the staff of the Eastern Hills Band has been selected due to the skills and qualities they possess and for the benefit they can bring the band program and should be considered an extension of the directors. They are to be treated with the highest level of courtesy and respect. Chaperones are also extensions of the authority of the directors. Without the dedication of our chaperones and other adults who assist the band, we could not travel or perform in the way we do. These people work hard, and the only payment they receive is our appreciation. Be respectful, polite, cooperative, and remember that the words "Please" and "Thank You" cost you nothing, but are highly valued by the recipient. If you disagree with something a chaperone asks you to do, you are not to argue with the chaperone. You are to do as you are asked and then inform the directors at a later time. This policy will be strictly enforced. If a chaperone has to report a student for being uncooperative or for any other reason, that student is subject to removal from the group.

STUDENT LEADERSHIP

The band is divided into layers of leadership from the regular member up to the band directors:



Students must observe this chain of command throughout the year. Questions and concerns must be directed to the nearest leadership above your current position. As leaders, complaints must always go UP the chain. Never complain to or in front of members at or below your leadership level. This ensures the band may operate smoothly and that concerns may be addressed quickly and efficiently.

BAND BOOSTERS

Parents are an important part of the Eastern Hills Band, and have a vital role to play. Without the assistance and cooperation of band parents, there would be no chance for the level of success we want the band to reach. There are many things parents can do.

Attend Band Booster Meetings. We meet the first Tuesday of every month at 7:00 p.m. in the EHHS Band Hall.

Volunteer for parent committees. There are many different tasks with which we need your assistance, and everyone can find the niche that suits them best:

- a. chaperone
- b. uniforms
- c. transportation
- d. equipment handling (pit crew)
- e. sewing
- f. meals
- g. publicity

Be supportive of the band program and your child's participation by:

1. Assisting your child to be prepared and punctual for every rehearsal and performance.
2. Notifying directors if your child is to be absent or late for performance or rehearsal. This should be done in advance unless in an absolute emergency.
3. Encouraging your child to practice at home and helping them find a quiet place to do so.
4. Showing your interest and support in your child's music study by enthusiastically attending every performance possible.
5. Discussing with directors and staff anything that will help them understand and better serve your child.
6. Arranging for private lessons for your child if at all possible.

We welcome visitors to rehearsals but request they remain quiet so as not to disturb the focus of the students or staff. Cheering at appropriate times is welcome!

Eastern Hills Band Agreement
2009-2010

In becoming a member of the Eastern Hills High School Band, I agree to do my personal best to carry on the tradition of excellence and success both musically and personally. I realize that conscientious attendance and preparation for rehearsals and performances are essential for the Eastern Hills Band to operate successfully. I will fulfill all financial obligations outlined in this handbook. I fully understand the conditions set forth in this handbook and agree to abide by them. I also grant to the Eastern Hills High School Band and Booster Club the right to use, reproduce and/or publish for historical, publicity, and/or fun purposes excerpts from interviews, articles, essays, and letters; photographs; video and audio recordings; and any other still or moving images of me taken during my participation in the band program, such use to be as in the Band newsletter, the Band web site, Band videotapes, newspaper articles, etc., and to use my name in this connection. I understand I shall not be paid for such use.

(Student's Name — Please Print)

(Student Signature)

(Date)

(Parent/Guardian Signature)

(Date)

(Parent/Guardian Signature)

(Date)

Home Phone

Student Cell Phone

Parent Cell Phone

This agreement must be signed by both the student and the parent(s) and turned in by the first week of school.